

COMMERCIAL & SPORTS TURF EQUIPMENT



JOHN DEERE

NOTHING RUNS LIKE A DEERE





CONTENTS

Work. Done Well.	4 – 5
All-Round Support	6 – 9
Stage V Diesel Technology	10 – 13

ZERO TURN MOWERS

Z740R Petrol ZTrak™	16 – 17
Z950R Petrol ZTrak™	18 – 19
Z994R & Z997R Diesel ZTrak™	20 – 23
Michelin X Tweel Turf Airless Radial Tyre	24 – 25
Optional Equipment	26 – 27

FRONT ROTARY MOWERS

1500 Series	30 – 33
Optional Equipment	34 – 35

WIDE-AREA ROTARY MOWERS

1600T Series III	38 – 39
------------------------	---------

DIESEL MOWING TRACTORS

X940 Series	42 – 45
X950R	46 – 49
Attachments	50 – 53

SPORTS TURF EQUIPMENT

Walk-Behind Reel Mowers	56 – 57
2653B & 7200A	58 – 59
6000A-Series	60 – 63
9009A Rough Mower TerrainCut™	64 – 65
Work and Transport, Renovation, Maintenance	66 – 67

COMPACT UTILITY TRACTORS

1R, 2R & 3R Series	70 – 71
--------------------------	---------

PRODUCT SPECIFICATIONS	72 – 79
-------------------------------------	---------



WORK DONE WELL.

Every day, you give the job your best. As a true professional, you go the extra mile to get the best results you can. Not because the client expects it, or your company. But because you'd never settle for anything less yourself.

That same eye for quality also explains why you appreciate good tools and look after them well. Like any good craftsman, you know from experience that 'quality in' and 'quality out' really do go hand-in-hand.

If that sounds like you, you're in good company with John Deere. We take as much pride in the quality of our machines as the people who use them all over the world. Professionals like you, who understand the meaning of work done well.



ALL-ROUND SUPPORT

From advice and sales to maintenance and repairs, your local John Deere partner has everything you need to keep your investment running like clockwork. Find your nearest John Deere dealer today at dealerlocator.deere.com





A GLOBAL COMMUNITY

The people at your local John Deere dealership are always there for you – with personal service you can rely on. As part of the John Deere community, they combine their own individual style with all the benefits of a strong global company.



JOHN DEERE
FINANCIAL

TAILOR-MADE FINANCING

John Deere Financial has been helping customers grow their businesses for more than 150 years. Based on our unique understanding of your market and the challenges you face, we offer competitive, tailor-made financing for the machines you need to raise your game.

From hire purchase to leasing and rentals, your local John Deere dealer can help you choose the options that suit your business best. Why not drop in for a chat?



POWERGARD™

STATUS: PROTECTED

When you protect your equipment with a PowerGard™ Protection agreement, your business has the steady machine uptime and nonstop peak performance it needs to thrive.



KEEP YOUR MACHINE RUNNING

PowerGard™ agreements protect you against unexpected repair costs and keep your maintenance on track with genuine parts. Three fixed rate packages provide increasingly comprehensive levels of cover to keep your machine running at peak performance with steady uptime.

PowerGard™ Maintenance: Preventative maintenance work – it's essential for keeping equipment in good working order based on factory recommended intervals.*

PowerGard™ Protection: Base level of protection that covers unusual events that can lead to costly repairs, and also covers the main drive train components.

PowerGard™ Protection Plus: The ultimate in protection – the total peace of mind package that covers all components included in PowerGard™ Protection, plus electrical, cooling, hydraulics and more.

FINANCING

Include your PowerGard™ Protection agreements into your financing offer and benefit from competitive rates, with flexible payments.*

* PowerGard™ agreements and Financing for PowerGard™ Maintenance is currently only available with participating dealers. Country regulations apply.



FACTS, NOT GUESSWORK

Ever wished you could X-ray your machine to see how it's doing inside? Expert Check is the next best thing: a thorough diagnosis of all key components (including sensors, electronics and software) using up-to-the-minute, field-based checklists and tools that are exclusive to John Deere dealers. The result is a detailed report stating exactly where your machine stands, as well as what needs doing and when.

CLEAR PRICES

Based on this report, you can tell us exactly what work you want done. With transparent pricing and all-in packages for parts and labour, Expert Check takes the guesswork out of repairs and maintenance, too.



ORIGINAL JOHN DEERE PARTS

Even John Deere machines need repairs eventually. When the day comes, our dealers pull out all the stops to maximise uptime and get them back on the job. With a state-of-the-art workshop and a fully-trained technical team on hand, they can provide professional support backed by the latest updates coming direct from the factory. For smaller repairs you'd rather do yourself, they can supply everything you need overnight – even for older models.



STAGE V DIESEL TECHNOLOGY

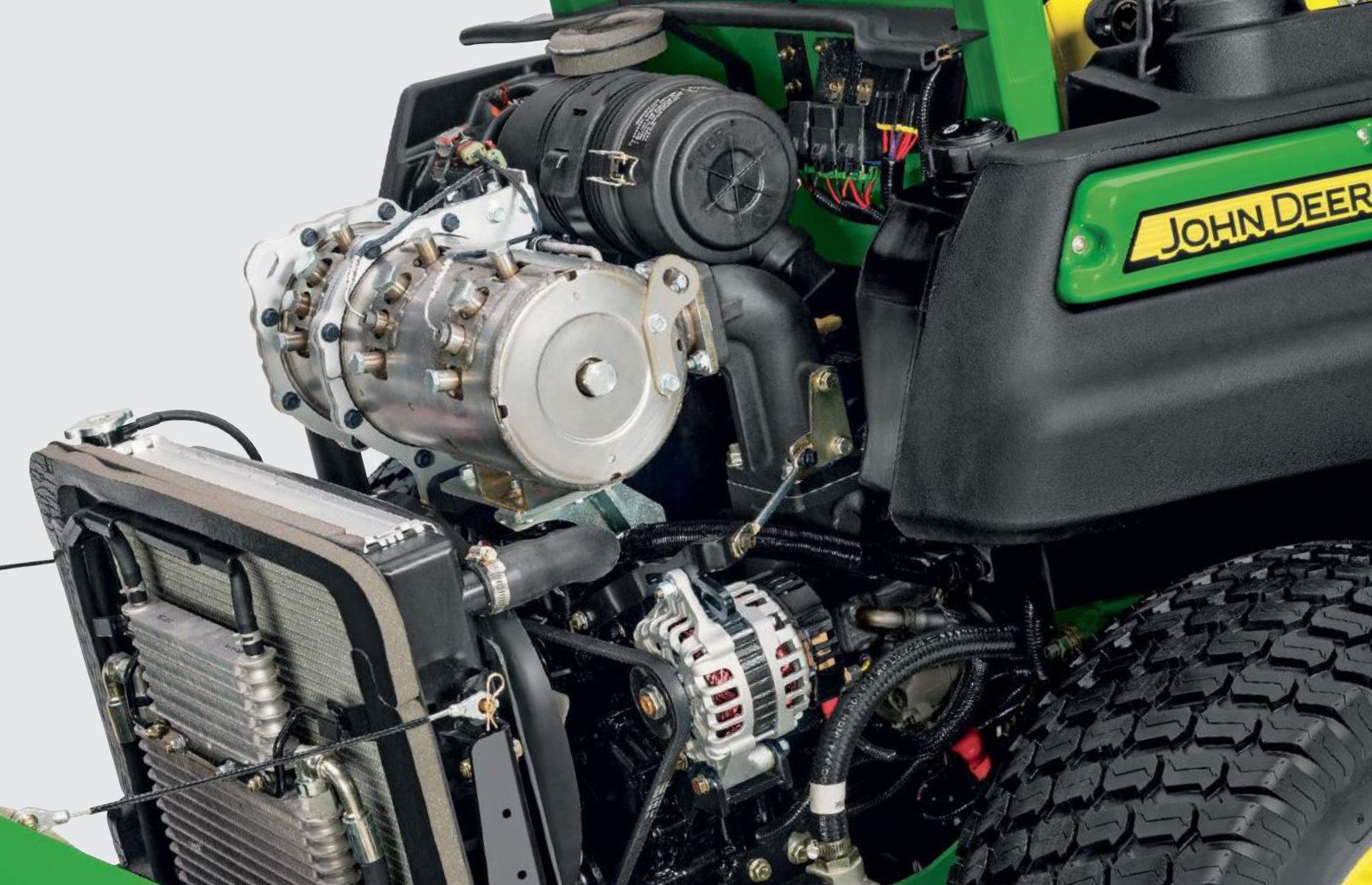
Environmental protection standards are getting stricter. To protect the environment and your investment the diesel engines in our Commercial Mowing and Sports Turf Equipment comply in full with the latest Stage V emission standards.

STAGE V REGULATION (EU) 2016/1628 – NON-ROAD MOBILE EQUIPMENT APPLICATION

The new European emissions standards, commonly referred to as “EU Stage V”, will apply to engines installed in off-road mobile equipment, as stipulated according to engine output. These EU Stage V standards will also be applicable to diesel engines with an output range of less than 19 kW which were previously not targeted by the existing standards. For models with an output of 19 kW and more, the permitted values for NOx and PM (Particulate Matter) emissions are one level stricter than previous standards. In addition, new PN (Particle Number) standards have also been set making the new emissions standards generally the strictest in the world.

With this regulation in place, all diesel powered turf equipment is impacted!





WHY ARE PM AND NO_x CRITICAL COMPONENTS

	PM	NO _x
ALSO KNOWN AS	Particulate Matter, airborne particles such as soot, smoke	Nitrogen Oxide (NO), Nitrogen Dioxide (NO ₂)
WHAT IS IT?	Unburned Hydrocarbons (fuel)	Molecule that is created in the combustion process
WHAT CAUSES IT?	- Low combustion temperature - Low oxygen level during combustion - Low combustion pressure	- High combustion temperature - High oxygen level during combustion - High combustion pressure
WHY IS IT A REGULATED EMISSION	- Soot particles are very small and get trapped in the lungs - Associated as a cause of cancer	NO _x molecules attach to other elements in the atmosphere and produces smog
ALSO REGULATED IN ENGINE ABOVE 19 KW	PN – Particle Number. Regulates the number of particulates contained within a mass unit of emissions; separate from the existing PM	

REGULATIONS FOR DIESEL ENGINES IN THE TURF RANGE

Regulation diversify by power category

ENGINE POWER	ENGINE POWER	CO	NMHC+NO _x	PM	PN
KW	HP	G/KWH (G/HPH)	G/KWH (G/HPH)	G/KWH (G/HPH)	#/KWH
0 < P < 8	< 10.7	8.00 (6.00)	≤ 7.50 (5.60)	0.40 (0.30)	
8 ≤ P < 19	10.7 ≤ P < 25.5	6.60 (4.90)	≤ 7.50 (5.60)	0.40 (0.30)	
19 ≤ P < 37	25.5 ≤ P < 50	5.00 (3.70)	≤ 4.70 (3.50)	0.015 (0.011)	1×10 ¹²
37 ≤ P < 56	50 ≤ P < 75.1	5.00 (3.70)	≤ 4.70 (3.50)	0.015 (0.011)	1×10 ¹²

Detailed information about John Deere turf equipment can be obtained from your John Deere Dealer.

ENGINE TECHNOLOGY



THE TECHNICAL CHALLENGE

To reduce PM, it takes:

- increase oxygen level
- high combustion temperature
- increase combustion pressure
- advance engine timing

To reduce NOx:

- lower oxygen level
- lower combustion temperature
- lower combustion pressure
- retard engine timing

This tradeoff requires modern engine technology and above 19 kW also after treatment components.

For John Deere Turf equipment there are two power categories, that require different engine technology:

CATEGORY BETWEEN 8 AND 19 KW

Our modern engines meet the newly imposed emissions standards for the under 19 kW range with no aftertreatment devices needed.

CATEGORY BETWEEN 19 AND 56 KW

- Direct injection to create clean-burning power
- Common rail system to allow fine-tuned electronic control of fuel injection
- Fully-electronic control to provide total intelligent engine control
- Cooled EGR (Exhaust Gas Recirculation) to reduce nitrogen oxides (NOx)
- Diesel Particulate Filter (DPF) to catch particulate matter (PM) in the exhaust gas
- Diesel Oxidation Catalyst (DOC) to reduce amount of CO (carbon monoxide)
- Fuel cooler for better fuel efficiency



WHY CHOOSE JOHN DEERE?



Environmental Advantage

It's not just about meeting regulations. By running equipment with modern engine technology, you help to protect the environment too.



Investment Protection

Investing in the latest technology protects the residual value of your equipment long term.



Business advantage

Safeguard your long-term business with clients who require compliance with the latest environmental standards.



Optimized Solution

Drawing on our non-road machine experience, we meet emissions requirements while maximizing engine performance and reliability.



Field Proven

Like all John Deere equipment, we test the new Stage V compliant engines comprehensively and thoroughly before release.



Fully Supported

Together with our dealers, distributors and channel partners, we support you with this new technology.



Fuel Efficient

Our Stage V compliant equipment does not affect fuel efficiency.



Performance

These modern engines do not reduce machine performance in the field.



Petrol

All our petrol powered equipment is Stage V compliant as well.



ZERO TURN MOWERS

A GREAT FINISH – FASTER



Our ZTrak™ Zero-Turn Mowers were designed with our commercial lawn mowing customers in mind. Since you all have different needs, we came up with different ways to help you meet them.



Z740R PETROL ZTRAK™

THE COMMERCIAL MOWING ENTRY LEVEL

If you count on the power, the comfort and the robustness of a semi-commercial grade machine the Z740R ZTrak™ is the perfect choice – professional grade engine, strong mower deck and high end performance.

360°



TURN ON THE SPOT

Like all our Zero Turn Mowers the Z740R is so nimble, operators can navigate trees, flowerbeds and other obstacles without missing a beat – and without slowing down.

HIGH CAPACITY PRO MOWER DECKS

A deep deck design to provide excellent airflow, so large volumes of material can be processed quickly and efficiently.



MulchControl™ Attachment The MulchControl™ attachment makes mulching more practical for many mowing situations.





COMFORTABLE OPERATOR PLATFORM

Adjustable comfort motion-control levers, the ComfortGlide™ seat and the adjustable foot platform make you feel in your own comfort zone – in addition with the option Tweel (for 54 in deck only) ride comfort is even more improved.



PROFESSIONAL GRADE ENGINE

Smooth and powerful V-Twin engine for performance and long life.



Z740R

16.2 kW (21.7 hp) at 3,100 rpm

Forward speed: 13.7 km/h (8.6 mph)

Mowing width: 122 cm (48 in),
side discharge*

Mowing width: 137 cm (54 in),
side discharge*

* Mulching kit: optional

Z950R PETROL ZTRAK™

PETROL POWERED, FULL COMMERCIAL

For those who want everything in a zero-turn-mower you need to keep working your best from the start to finish – the power, the comfort, the cut quality.



HEAVY DUTY FRAME

No flex, no twist: even on challenging terrain, this durable frame stays rock solid.



POWER TO PERFORM

A powerfull commercial-grade engine delivers class leading performance and efficiency.



7-IRON™ PRO SIDE DISCHARGE DECK

Stamped from 7-gauge steel, these side discharge decks can be converted to mulching and are shaft-driven to handle demanding commercial applications.





EASY HEIGHT OF CUT ADJUSTMENT

Easy to change the Height of Cut on the dial – for transport just lock-out without changing the pre-set height of cut.



THE UNIQUE CROSS-PORTING SYSTEM

Routes the coldest hydraulic fluid to the hydraulic pump that's doing most of the work – increasing the life of the transmission.



Z950R

19 kW (25.5 hp) at 3,250 rpm
Forward speed: 19.3 km/h (12 mph)
Mowing width: 137 cm (54 in), side discharge*
Mowing width: 152 cm (60 in), side discharge or rear discharge*

* Mulching kit: optional

Z994R & Z997R DIESEL ZTRAK™

A QUICK, PROFESSIONAL CUT

Our Zero Turn Mowers do the job at least 20 percent faster than a front mower, saving you money every time you use them. The Z997R and the Z994R combine incredible manoeuvrability with a powerful diesel engine and a high-capacity deck – plus outstanding build quality for years of faithful service.



A CUT BEYOND

Z994R offers a 137 cm (54 in) side discharge and 152 cm (60 in) side or rear discharge, the Z997R even comes with 152 cm (60 in) and 183 cm (72 in) side and rear discharge.



MUSCLE YOUR WAY THROUGH THE TOUGH STUFF

The heavy duty, large capacity Z997R gives you the front mower like power, along with the ZTrak™ productivity.





UNMATCHED CONTROL

On the Z997R, the main operating switches and controls are located on the right-hand console, just like on our Z950R.



THE EXTRA COMFORT

Small things – large impact – the individual adjustable foot pegs give the extra comfort needed for a long working day.



KEEP CONTROL IN YOUR HANDS

The padded grip control levers allow simple and easy speed and direction control. For operators convenience the levers are multiple ways adjustable.



WORK IN COMFORT

The ComfortGlide™ seat with additional fore / aft suspension is fully adjustable for all-day comfort and productivity. It has armrests, dial-adjustable suspension response, and three levers – one for fore / aft adjustment, one for lumbar support and one for seat-back tilt.



EASY SERVICING

Key engine components are easily accessible under the bonnet. The seat tips up for easy access to the hydraulic system (Z997R) and the foot platform tips up for easy access to the deck spindles.



Z994R

18.4 kW (24.7 hp) at 3,200 rpm (Stage V)
Forward speed: 17 km/h (10.5 mph)
Mowing width: 137 cm (54 in), side discharge
Mowing width: 152 cm (60 in), side discharge* or rear discharge

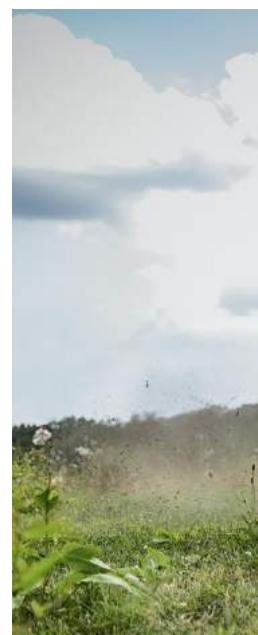
* Mulching kit: optional



Z997R

27.5 kW (37.4 hp) at 2,800 rpm (Stage V)
Forward speed: 18.5 km/h (11.5 mph)
Mowing width: 152 cm (60 in), side or rear discharge*
Mowing width: 183 cm (72 in), side or rear discharge*

* Mulching kit: optional





**“WHEN YOU START
YOUR WORKDAY
ON YOUR MOWER,
YOU REALLY VALUE
COMFORT.”**

MAURUS KAYSER

**WORK
DONE WELL.**



A few years ago, Maurus recommended his employer switch to John Deere and he is convinced it was the right choice. As a passionate lawn care professional at Schmidt WeissGrün GmbH in Southern Germany, he appreciates the consistency his fleet of eight Z997R mowers delivers: “These machines steadily and effortlessly power through even thicker patches of grass and the service at John Deere is first class,” he says. Maurus is in close contact with his local John Deere dealer, where his feedback is not only welcomed, but taken seriously. “The X-Tweel airless tyres are a real improvement. They really increase operator comfort and machine stability on slopes,” he adds. ■

TOUGH. SMOOTH. DURABLE.

MICHELIN X TWEEL TURF AIRLESS RADIALS

Forget punctures and uneven tyre pressures. The optional Michelin X Tweel Turf Airless Radial Tyres are immune to sharp objects, glide smoothly over obstacles, and last 3 times longer than conventional pneumatic tyres.



STEADY RIDE

Michelin X Tweel Turf Airless Radial Tyres are much better at cushioning jolts than a conventional wheel-and-tyre setup. So when operators drive up against obstacles or over curbs, they won't feel it so much – and neither will your machine.

CONSISTENT CUT

Uneven tyre pressures can cause an uneven cut by tilting the mower deck. That can't happen with Michelin X Tweel Turf Airless Radial Tyres – one less worry for you and your operators.





STAY ON TRACK

The full width poly-resin spokes deform until your machine is practically running on tracks! That makes a big difference to traction – and takes the pressure off your valuable turf.

FIT AND FORGET

Airless Michelin X Tweel Turf Airless Radial Tyres can roll over thorns or broken glass. No more expensive downtime for wheel changes or tyre repairs!

TREAD LIGHTLY

The radial contact patch on a Michelin X Tweel Turf Airless Radial Tyre lasts 3 times longer than a conventional pneumatic tyre. It's also wider, which improves traction and lightens your machine's footprint. Tweels are available for Z740R with 54 in deck as well as for all Z950R, Z994R and Z97R.

Working Ply

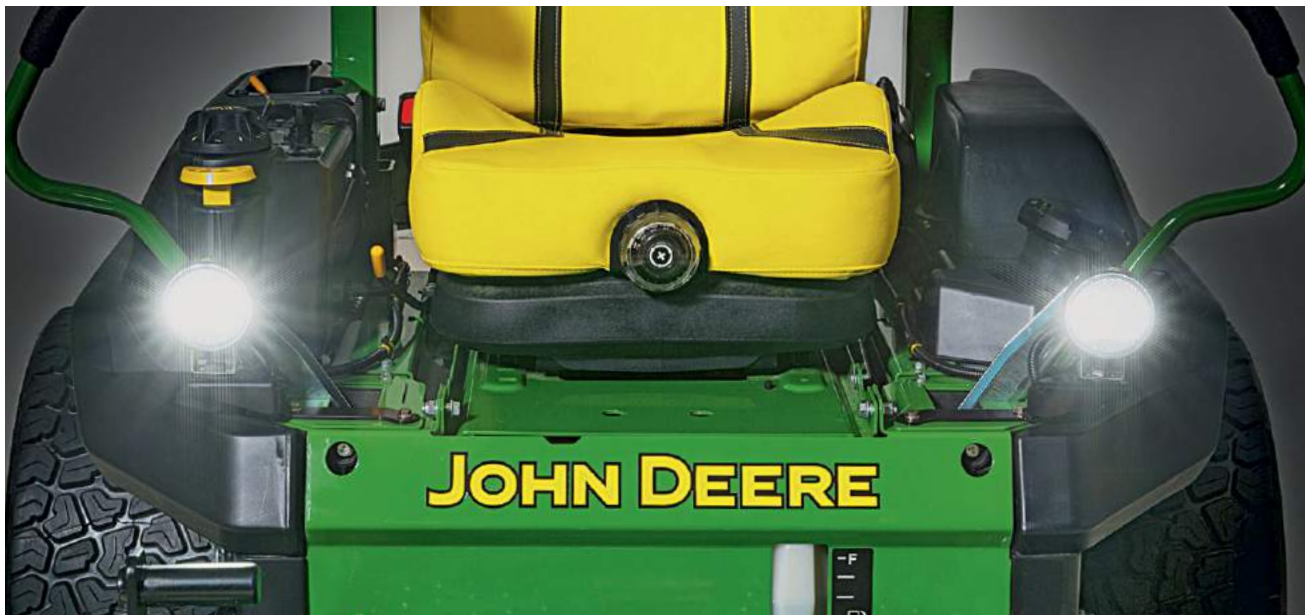
Transition Ply

Working Ply



OPTIONAL EQUIPMENT

FLEXIBLE & DEPENDABLE



FRONT LIGHT KIT

Keep working from sun-up to sundown, and maybe a little longer.

JACK STAND KIT

Gain easy access for maintenance and blade changes (Z994R, Z950R and Z997R).





Cargo Box
(Z740R, Z950R)



Garden Tool Kit
(Z740R, Z950R and Z994R)



String Trimmer Kit
(Z740R, Z950R and Z994R)



MULCH KIT

Convert mowers with side-discharge mower decks to mulch.



STRIPING KIT

Give every lawn that premium ballpark after-cut look.

FRONT ROTARY MOWERS

FAST, QUALITY PERFORMANCE IN THE ROUGH



With 4-wheel drive and high-performance, 3-cylinder diesel engines, our front rotary mowers are powerful enough to carve through tough terrain quickly. The 60 litre fuel tank enables up to 10 hours of continuous mowing, meaning you'll tire before your mower does.



1500 SERIES

FLEXIBLE & DEPENDABLE

The 1500 series TerrainCut™ commercial front rotary mowers are specially designed for an enviable cut quality when mowing thick grass at high speeds. Highlights include the high-capacity 7-IRON™ decks, efficient high-torque diesel engines and exceptional 4-wheel drive – plus optimal safety and comfort for operators.



VERSATILE

The TerrainCut™ Series excel in the world of commercial mowing but it doesn't just stop there. The 152 cm (60 in) front blade can be easily fitted instead of the mower deck to tackle a whole host of additional activities.



WORKS AS HARD AS YOU DO

Our front rotary mowers have a quiet, efficient cooling system that's easy to clean and service. The 60 litre fuel tank enables up to ten hours of non-stop mowing and the liquid cooled 3-cylinder diesel engine uses direct injection for outstanding economy and mowing performance.

MORE TRACTION, MORE STAYING POWER

With an oversize hydrostatic module, large radiator-style oil cooler, oil immersed disc and wet PTO clutch, this transmission is ready for anything. Kerbs, slopes and slippery grass are no problem either: the 4-wheel drive system uses a mechanical axle and has a differential lock as standard.





INTUITIVE, ERGONOMIC CONTROLS

The central display and colour-coded controls make operation easy and intuitive. The Twin Touch™ transmission pedal follows the natural motion of your foot. Standard features include an electric PTO switch to engage the mower deck and individual foot turn brakes on the left side of the platform.



HIGH-COMFORT RIDE

Thanks to the tilt steering wheel and adjustable seat, operators can find their ideal driving position in seconds. Choose either an ergonomic mechanical seat or the Air Ride suspension seat with armrests for peak productivity all day long.



7-IRON™ PRO SIDE DISCHARGE DECK

Stamped from 7-gauge, 4.6 mm (0.179 in) steel, this side discharge deck is designed for tough commercial applications and can also be converted to mulching.



FASTBACK™ REAR DISCHARGE DECK

Stamped from 7-gauge, 4.6 mm (0.179 in) steel, this rear discharge deck can also be converted to mulching. Rear-discharge mower decks are ideally suited for areas where people are present.



Easy Height Of Cut Adjustment: Quick and simple changes between cutting heights save you time.



Run-Flat Deck Tyres: Why let tough conditions slow you down? Even when punctured, these semi-pneumatic caster tyres will not go flat.



Easy To Service: Servicing has never been so simple! All daily checkpoints are easy to find and access and the deck rotates for fast cleaning and blade changes.



1550

18.4 kW (24.7 hp) at 3,000 rpm (Stage V)
Single range speed



1570

27.5 kW (37.4 hp) at 2,800 rpm (Stage V)
Optional GLC1500 Collector (600 ltr)
Single range speed



1580

27.5 kW (37.4 hp) at 2,800 rpm (Stage V)
Optional GLC1500 Collector (600 ltr or 900 ltr)
Dual range speed



LONG-LASTING PERFORMANCE

With a high-strength 7-IRON™ deck made from a single piece of stamped, reinforced steel, we built the 1500 series to handle the big, heavy jobs. The deck has a smooth underside for reduced material buildup and a deep design that delivers excellent airflow. The long-lasting hydrostatic transmission and heavy-duty transaxle maximise performance and uptime, saving you time and money.



HIGH-STRENGTH FRAME

The self-reinforcing design spreads stress over a larger area to increase overall strength and allows components to be placed closer to the ground for a low centre of gravity.



1575

275 kW (374 hp) at 2,800 rpm (Stage V)
ComfortCab
Single range speed



1585

275 kW (374 hp) at 2,800 rpm (Stage V)
ComfortCab
Optional GLC1500 Collector (600 ltr or 900 ltr)
Dual range speed

ON ALL FRONT ROTARY MOWERS

- Hydrostatic 4-wheel drive
- Cutting width:
 - 153 cm (60 in) or
 - 183 cm (72 in) side discharge,
 - 158 cm (62 in) or
 - 183 cm (72 in) rear discharge

OPTIONAL EQUIPMENT

COMFORT CAB – QUIET & ROOMY

However hard your machine works, the Comfort Cab lets you operate in comfort. This fully integrated cab solution combines a wide range of innovative features to create a premium workspace. The spacious interior is encased by curved glass for 360° visibility and stays ultra-quiet thanks to measures that include acoustic foam floor mats.



INTELLIGENT DESIGN

Operators enjoy an unobstructed view no matter what task is being performed. Generous headroom and curved glass on all four sides provide a roomy interior and give operators a big-cab feel. This helps reduce operator fatigue, leading to increased overall productivity.

CLIMATE CONTROLLED COMFORT

No matter what the weather is doing outside, you're working in comfort in our factory-installed cab. With fully integrated heat and air conditioning, our fully sealed cab features an upholstered air ride seat, dual forward work lights, a two speed windscreen wiper and front and rear warning lights.

PREMIUM SPECIFICATIONS

The cab is packed with features designed to make life easier and more productive. Highlights include a two-speed front windscreen wiper and roof-mounted forward work lights for optimum forward visibility.



GLC1500 GRASS AND LEAF COLLECTION SYSTEM – HIGH CAPACITY = HIGH PRODUCTIVITY

The GLC1500 collection system packs in material efficiently thanks to a hydraulically powered fan design that keeps the flow more constant. The hydraulic system ensures fast lifting and lowering to minimise emptying times when the collection hopper is full. If you need more collection capacity than the standard 600 litre version, consider the larger 900 litre version.



COMPACT AND EFFICIENT

The system is no wider than the mower deck when fitted. This protects the fan and makes the machine more manoeuvrable in operation, as well as when loading and unloading for transport.



HEIGHT AND REACH

The High Dump version lets you empty the collector straight into high-sided trucks and trailers and has excellent reach to help you fill them evenly.

WIDE-AREA ROTARY MOWERS

UNCOMPROMISING PRODUCTIVITY



A quality machine is one you can count on to do great work every single day. With extra-wide cutting widths and high-torque diesel engines, our wide-area rotary mowers offer excellent performance over the long haul.



1600T SERIES III

COVERS SERIOUS GROUND

With its outstanding traction and a cutting width of up to 325 cm, this high-torque diesel can cover an amazing 8.5 acres per hour. The 1600T Series III masters slopes with ease and delivers a premium cut even in the thickest grass.



TERRIFIC TRACTION ON SLOPES

The 1600T Series III offers a choice between on-demand or full-time 4-wheel drive. The wing decks can mow at a 45-degree upward angle and a 20-degree downward angle for a flawless cut.



HIGH-PERFORMANCE ENGINE

The 44 kW (60 hp) 4 cylinder 16 valve turbocharged direct inject diesel engine provides plenty of power and torque to give superior performance. It also benefits from isolated mounting to minimise vibration exposure.

FLEXIBLE PRODUCTIVITY

To mow narrow lanes, use either one wing and the centre deck, or the centre deck alone. The optional tricycler mulching kit adds even more flexibility.





DURABLE DECK DESIGN

The 7-gauge steel decks have isolated deck motors and a 19 mm protection bar to drastically reduce vibration – even on highly uneven terrain.



1600T SERIES III

44 kW (60 hp) at 3,000 rpm (Stage V)
Hydrostatic
Max mowing speed up to 24 km/h (15 mph)
Differential Lock

– Optional: CAB and Road Homologation

DIESEL MOWING TRACTORS

BUILT TO LAST



Our well-built diesel mowing tractors provide a professional cut with plenty of easy-to-use features. Adjust the cutting height from the dashboard dial, and finish the job quickly with the fuel-efficient, high-torque diesel engine.



X940 SERIES

POWERFUL & INTUITIVE

Our rugged X940, X948 and X949 models offer the perfect combination of performance, ease of use and comfort. Available in different configurations including 2 or 4 wheel drive and all wheel steer – we cater for varying requirements.



DIGITAL DASHBOARD

The digital instrument cluster reads very well in sunlight and ensures fast diagnostics. Features include a “best cut zone” target range for improved cut quality and “start sequence” indicators to catch any interlock issues on start-up.



EASY TO USE HYDRAULICS

Ergonomic levers hydraulically raise and lower the mower deck and attachments. A “float” position enables front-mounted equipment to follow ground contours. The intuitive controls enable easy operation.

DRIVE OVER DECK

You don't need tools or muscles to connect or disconnect these mower decks. Just reverse over them slowly until you hear the click (optional).





MOWER DECKS FOR X940 SERIES

These commercial grade decks are stamped from a single steel plate, then rust-proofed in a special dual process. The shaft drive is built to last, and the wet PTO clutch is virtually maintenance-free. With the optional MulchControl™ Function your side discharge mowerdeck converts into a Mulching mowerdeck in under 30 seconds. The side discharge deck is perfect in long grass.

Easy Cutting Height Adjustment:

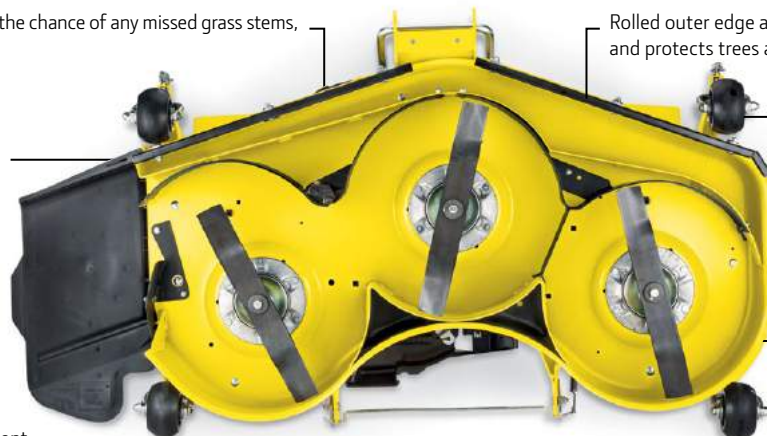
The dashboard dial adjusts cutting height in 6 mm (0.25 in) increments.



Greater blade overlap reduces the chance of any missed grass stems, even on turns.

Optional MulchControl™ provides the ability to change between mulching and side discharge.

Flat-top design provides a smooth underside for excellent cut quality, in addition to being durable and versatile.



Rolled outer edge adds strength to the deck and protects trees and fences while mowing.

Wide roller and adjustable gauge wheels limit turf scalping on rough or uneven terrain.

Deep deck design ensures great grass lift for an even cut.



RELIABLE, HIGH-TORQUE ENGINE

The 3-cylinder diesel engine offers high torque to power all attachments. Efficient combustion reduces exhaust emissions and increases fuel economy. The redesigned bonnet improves air management for lower operating temperatures.

ROLL-OVER PROTECTION

All X940 Series models are fitted with a rugged roll-over protection system (ROPS) to keep operators safe during operation. The bar can be folded down temporarily when working under trees or overgrowth.



HYDROSTATIC TRANSMISSION AND HYDRAULIC POWER STEERING

The X940 Series models are easy to operate and manoeuvre thanks to the Twin Touch™ pedals and standard power steering.



FULLY WELDED STEEL FRAME

A full length, fully welded steel frame provides maximum strength. The built-in front bumper accepts front weights and the nodular cast iron front axle maximises durability.



MULCH CONTROL

This feature boosts productivity by reducing collection volumes and emptying cycles significantly when bagging. If conditions are unsuitable for mulching, operators can switch to side discharge without leaving their seat.

ON ALL X940 SERIES MODELS

- Twin Touch™ Foot Pedals
- Cruise Control
- Deck Lift System: Hydraulic
- Deck Engagement: Electric
- Optional: Road Homologation Kit

COMMERCIAL MOWER DECK OPTIONS

122 cm / 48 in Side Discharge

137 cm / 54 in Side Discharge

152 cm / 60 in Side Discharge

- Cutting height 25 – 133 mm (1 – 5.25 in), increments 6 mm (0.25 in)



X940

18 kW (24.5 hp) at 3,400 rpm (Stage V)
--

Forward speed: 13.7 km/h (8.5 mph)

Hydraulic, 2 front wheel power steer

2-Wheel Drive

- Collection System: optional



X948

18 kW (24.5 hp) at 3,400 rpm (Stage V)
--

Forward speed: 13.7 km/h (8.5 mph)

Hydraulic, 2 front wheel power steer

4-Wheel Drive

- Collection System: optional



X949

18 kW (24.5 hp) at 3,400 rpm (Stage V)
--

Forward speed: 13.7 km/h (8.5 mph)

Hydraulic, 4 wheel power steer

4-Wheel Drive

- Collection System: optional

X950R

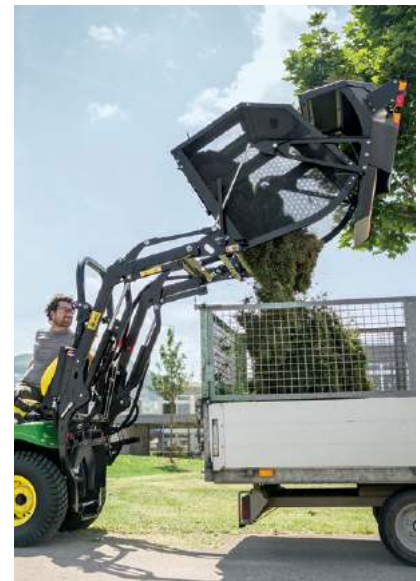
COMFORTABLE & RELIABLE

This supremely comfortable rear discharge, rear collect Diesel Mower Tractor has a high-torque diesel engine and heavy-duty wheel motors that can work hard all day – plus a rugged steel frame and mower deck for years of faithful service.



LOW DUMP

The collector fits and removes in seconds and is opened, raised and emptied by a separate hydraulic pump at low engine rpm. The high-capacity 570 litre low dump hopper means less time spent unloading, saving you time and money.



HIGH DUMP

With its generous 650 litre capacity, the high dump collector lets you go further before emptying. The collector offloads into the middle of your container or skip for smooth, even fills.



PRECISE

The outstanding 'tail follows trail' design makes it easy to mow near fences, walls and obstacles with the collection hopper. The bottom line: greater peace of mind and productive, hassle-free mowing.

PURE POWER

A fully welded steel frame. A commercial grade, stamped steel mower deck. Plus a high-torque, 3-cylinder diesel engine and heavy duty wheel motors for unrivalled strength and performance. All supported by the hydraulic power steering, adjustable steering wheel, ergonomic controls and high-back seat for comfort all day.



ULTRA-SONIC FILL DETECTION

Ever been caught out with a full hopper a long way from the unloading area? The Fill Sensor indicator monitors the real time fill status while you work – and being ultrasonic, it's reliably accurate, too.



Configurable: Choose a 122 cm (48 in) or 137 cm (54 in) Mower deck width.



Chute Performance Kit: this optional feature seals the gap between the deck and hopper so even really short clippings can't slip through onto your turf or pitch.

INTUITIVE

Operation made simple: the **multi-function lever** gives you fingertip control over deck and collection hopper.

DIGITAL DASHBOARD

Designed for improved visibility and diagnostics, the cluster has great features to improve cut quality and streamline your workflow.

POWERFUL

The 3-cylinder 18.5 kW (25.2 hp) diesel engine has ample torque for all your attachments. Its efficient combustion helps reduce emissions and fuel bills, while the bonnet improves air circulation for cooler running.

CUSTOMISE

With two mower deck widths, a choice of high or low dump and a host of practical options, the X950R diesel mowing tractor has everything you need to handle a wide range of tasks smoothly and profitably.



X950R

18.5 kW (25.2 hp) at 3,200 rpm (Stage V)
--

Forward speed: 14.5 km/h

Cruise Control

Hydraulic, 2 front wheel power steer

Rear Collection

Comfort Seat

- Twin Touch™ Foot Pedals
- Deck Lift System: Hydraulic
- Deck Engagement: Electric

COMMERCIAL REAR DISCHARGE MOWER DECK OPTIONS

122 cm / 48 in

137 cm / 54 in

COLLECTOR OPTIONS

Low Dump (570 ltr)

High Dump (650 ltr)*

* Front weights required for high dump.

OPTIONAL

Rear Deflector Kit

Collector Parking Stand

Road Homologation Kit

Front hitch

Front PTO

Cab

ATTACHMENTS

SOMETHING FOR EVERY JOB

Even the most robust machines need an extra boost now and then. Whatever the job you're dealing with, our collection of John Deere attachments will take your mower to new levels of performance and productivity.

FOR X950R AND X940 SERIES MACHINES



CAB

The all-new cab protects the operator in varying weather conditions and from the task at hand.



Seat: Choose either the comfort seat with adjustable back and optional armrests, or the new air-ride seat with full pneumatic suspension.



UTILITY CARTS

Choose from two durable utility carts. Both are easy to hook up and are designed to carry a wide range of materials safely.



Road Homologation Kit: This optional kit lets you use your machine on roads and in public environments.



SNOW AND MATERIALS BLADE

Clear 1.37 m (54 in) at a pass with this materials blade. It angles 27° right or left and is easy to fit / remove from the front hitch.



SNOW BLOWER

This industrial strength 2-stage tool clips onto your front hitch in moments using the enclosed snap pins.



POWER BROOM

Sweep debris or snow with this 1.32 m (52 in) wide broom. It's powered by the tractor's front PTO. Angles 27° right or left.



TYRES AND CHAINS

The tyre chain is recommended for extra traction when using winter attachments.

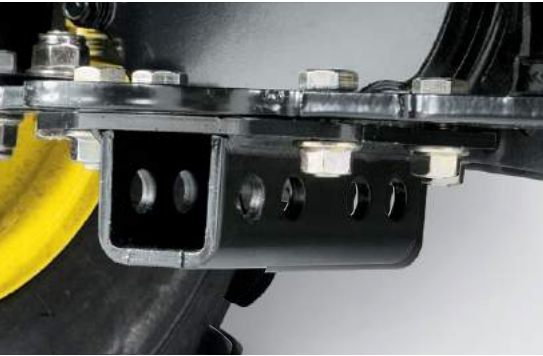


WEIGHTS & BRACKETS

These cast-iron weights are designed for safe operation on tractors with collection systems.

FOR X950R AND X940 SERIES MACHINES

HITCHES



Rear Receiver Hitch Kit And Hitch

Drawbar Kit: Attach the ball hitch to the drawbar or rear hitch to enable towing.



Front Hitch: The QuickTatch front hitch makes it easy to hook up and control front attachments such as the snow blade and power broom. On-hitch hydraulics lift and pivot attachments.

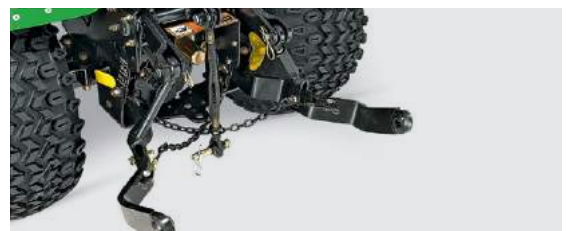
FOR X950R MACHINES



PARKING STANDS

Connect or disconnect your collector system quickly and easily with this tailor-made stand for high and low-dump systems.

FOR X940 SERIES MACHINES



Rear 3-point Hitch: Easily hook up and lift heavy rear attachments with the optional 3-point hitch. Optional rear PTO sends engine torque to rear attachments such as a power harrow, sprayer or rear spreader.



Rear PTO: To deliver ample torque for rear implements, add a rear power take off.



WEIGHT CARRIER

Fit rear weights easily whenever you need extra ballast to work safely.



DEFLECTOR SHIELD

Switch your X950R diesel mowing tractor from rear collect to rear discharge easily with this practical deflector kit.



BRACKETS

For better forward visibility and a shorter overall tractor length, use these optional brackets to mount weights sideways.



BRUSH GUARD

Protect your tractor's front end with this stylish guard. Not compatible with Front-Quick-Hitch.



FRONT FENDER KIT X900 SERIES

Front "Special-Edition" fenders are available for protection from mud and debris. Fenders are mounting parts for both front wheels.

SPORTS TURF EQUIPMENT

CHAMPIONSHIP PERFORMANCE IN EVERY DISCIPLINE



The better the finish, the better the performance can be. Whatever the challenge or sport, John Deere sports turf equipment delivers the consistent, high quality that professionals demand – and spectators appreciate.



WALK-BEHIND REEL MOWERS

FEWER STEPS TO A PERFECT QUALITY

The quality of your fine turf is one of the first things people notice. Our walk-behind reel mowers deliver a gentle, precise cut that players and crews find equally impressive – plus outstanding productivity for years on end.

SIMPLE OPERATOR CONTROL

Controls move forward to enable easy and efficient operation and an integrated operator presence bail allows the machine to automatically stop and disengage the reel when the bail is released. Loop-style handlebar enhances operator comfort.



180E & 220E

2.6 kW (3.5 hp) at 3,600 rpm
Electric motor drive reel cutting unit
45.7 cm (18 in) or 55.9 cm (22 in) cutting widths
Standard reels, 11 blades, 127 mm (5 in)
Adjustable frequency of clip





180SL

2.6 kW (3.5 hp) at 3,600 rpm
45.7 cm (18 in) cutting widths
Standard reels, 11 blades, 127 mm (5 in)



220SL

2.6 kW (3.5 hp) at 3,600 rpm
55.9 cm (22 in) cutting widths
Standard reels, 11 blades, 127 mm (5 in)



260SL

2.6 kW (3.5 hp) at 3,600 rpm
66 cm (26 in) cutting widths
Standard reels, 11 blades, 127 mm (5 in)

2653B & 7200A

CHOOSE YOUR CUTTING WIDTH ON THE FLY

For a premium cylinder-cut finish, choose either the 2653B or the 7200A. Both are easy to service and both are engineered for performance, reliability and ease of use. The 7200A has a toggle switch for on-the-go cutting width adjustments.



* with 26 in cutting unit / ** with 30 in cutting unit

WIDTH ON DEMAND SYSTEM

The width-on-demand system (7200A) enables operators to change cutting width while the cutting units are on the ground. Simply toggle the width-on-demand switch on the operator CommandARM™ forward to increase the cutting width to 183 cm (72 in, with 26 in cutting unit) or 213 cm (84 in, with 30 in cutting unit), or toggle backward to reduce the cutting width to 173 cm (68 in, with 26 in cutting unit) or 203 cm (80 in, with 30 in cutting unit).

Particularly on big jobs like football pitches, the ability to adjust widths to the terrain makes a big difference to throughput and productivity. For even more flexibility, set the mower deck on one side of these nimble machines when making tight turns around obstacles – or fit optional grass catchers.



Easy Maintenance: For routine maintenance, the 66 cm (26 in) and 76 cm (30 in) cutting units roll on and off the mounting arms quickly and easily.



EASY ADJUSTMENT

Quick Adjust Cutting Units let you set the height of cut in seconds, using only a power drill. Your adjustments affect both sides of the roller simultaneously.



2653B

14.6 kW (19.6 hp) at 3,000 rpm (Stage V)
17.8 cm (7 in) diameter reel
3 × QA7 66 cm (26 in) or QA7 76 cm (30 in)
Dedicated mowing width: 183 cm (72 in) with 26 in QA7 cutting unit; 213 cm (84 in) with 30 in QA7 cutting unit
Mowing speed: 0 – 8 km/h (0 – 5 mph)



7200A

18.4 kW (24.7 hp) at 3,000 rpm (Stage V)
17.8 cm (7 in) diameter reel
3 × QA7 66 cm (26 in) or QA7 76 cm (30 in)
Width on demand cut: 173 cm (68 in) – 183 cm (72 in) with 26 in QA7 cutting unit; 203 cm (80 in) – 213 cm (84 in) with 30 in QA7 cutting unit
Mowing speed: 0 – 10 km/h (0 – 6 mph)

6000A-SERIES

THE SPORTS PROFESSIONALS

Power and flexibility. Simplicity and security. Plus the control you need for a consistent, high quality finish on all the pitches you mow. Choose from the 6080A (5 QA5 cutting units, 203 cm cutting width), the 6500A (5 QA5 cutting units, 254 cm cutting width) and the 6700A (5 QA7 cutting units, 254 cm cutting width). Or opt for the E-Cut™ version of the 6080A or 6500A – and enjoy all the benefits of electric reel motors that eliminate 90 percent of all hydraulic oil leaks.



EASY ON YOUR PRECIOUS TURF

With their outstanding manoeuvrability and weight distribution, these 3-wheel machines go easy on your turf without sacrificing traction. The smooth tyres and GRIP all-wheel drive system work hand-in-hand to ensure a high quality after-cut appearance with a minimum of scuffs or marking.



QUICK ADJUST CUTTING UNITS

Save time and effort every time you adjust the height of cut: all our A Model Fairway and Trim mowers feature Speed Link™ – an ingenious system that adjusts both sides of the cutting unit at the same time.



3-WHEEL-STAND

The 3-wheel configuration makes the 6000 Series extremely manoeuvrable on pitches with minimum space for turning.



MORE CONTROL

Password-protected TechControl Display enables quickly setting or changing mowing speeds, turning speed and transport speeds to limit variations in performance by different operators, and communication of machine status is superb thanks to the ability to instantly see any operational alerts and set service timers.

**ON ALL
PRECISIONCUT™
MODELS**

SPEED LINK™

TECHCONTROL

**SPEED
SETTINGS**



6080A

18.6 kW (24.7 hp) at 3,000 rpm (Stage V)
5 QA5 cutting units 46 cm (18 in)
Total cutting width: 203 cm (80 in)
12.7 cm (5 in) diameter reel
Mowing speed: 0 – 12.9 km/h (0 – 8 mph)



6500A

18.6 kW (24.7 hp) at 3,000 rpm (Stage V)
5 QA5 cutting units 56 cm (22 in)
Total cutting width: 254 cm (100 in)
12.7 cm (5 in) diameter reel
Mowing speed: 0 – 12.9 km/h (0 – 8 mph)



6700A

18.6 kW (24.7 hp) at 3,000 rpm (Stage V)
5 QA7 cutting units 56 cm (22 in)
Total cutting width: 254 cm (100 in)
17.8 cm (7 in) diameter reel
Mowing speed: 0 – 12.9 km/h (0 – 8 mph)



POWER TO PERFORM

Power starts with the engine and the 6080A, 6500A and 6700A PrecisionCut™ and 6080A and 6500A E-Cut™ Hybrid Fairway Mowers feature a 3-cylinder, 18.4 kW (24.7 hp) diesel engine that has a strong reputation for power and performance.



6080A E-CUT™

18.6 kW (24.7 hp) at 3,000 rpm (Stage V)
5 QA5 cutting units 46 cm (18 in)
Total cutting width: 203 cm (80 in)
12.7 cm (5 in) diameter reel
Mowing speed: 0 – 12.9 km/h (0 – 8 mph)



6500A E-CUT™

18.6 kW (24.7 hp) at 3,000 rpm (Stage V)
5 QA5 cutting units 56 cm (22 in)
Total cutting width: 254 cm (100 in)
12.7 cm (5 in) diameter reel
Mowing speed: 0 – 12.9 km/h (0 – 8 mph)

ON ALL E-CUT™ HYBRID MODELS

- Electric reel drive cutting units powered by a 48 volt alternator
- 5 QA5 cutting units with 12.7 cm (5 in) diameter reel

E-HYBRID

SPEED LINK™

TECHCONTROL

MOW-ENGINE-SPEED

TERRAINCUT™ 9009A ROTARY MOWER

A HIGH-VOLUME WORKHORSE

We designed the 9009A in response to your top three priorities: uptime, performance and operating costs. With a wider cut width, refined technology and advanced features, this machine is engineered for maximum capacity and durability.



DURABLE PERFORMANCE

Even at high mowing speeds, the durable rear discharge mower deck combines high cut quality with even clipping disposal. The 4-wheel drive system takes hills in its stride and enables hillside mowing without uncut stripes.

FASTER SET-UP

With intelligent features like TechControl and the eHydro™ transmission, you'll spend less time adjusting your machine manually when grass or weather conditions change.

Passcode-protected TechControl enables quickly setting or changing mowing speed, turning speed, and transport speed, limiting variations in performance in changing conditions and by different operators.





ENHANCED MOWER DECKS

With their special double-action yoke, the five 68.6 cm (27 in) 10-gauge steel rotary decks hug contours closely for a premium finish every time. The front three mowing decks follow turns better than a single mowing unit and a selection of rear rollers complete the high-end look.



9009A

41.1kW (55.9 hp) at 2,800 rpm (Stage V)
Total cutting width: 274 cm (108 in)
Mowing speed: 0 – 12.8 km/h (0 – 8 mph)
2-pedal hydrostatic transmission



eHydro™ System: The eHydro™ system has an easy to use pedal system designed for more comfort and less operator fatigue. Together with the Cruise Control and Turn Speed Management features, this light, responsive system creates an intelligent operating machine.



Easy Height Of Cut Adjustment:

You don't need tools to adjust the height of cut. Just move a lever to the setting you need and you're ready to go. Compared with other systems, HOC change times are significantly faster – for higher productivity and lower operating costs.

MORE THAN JUST MOWING

John Deere offers a wide product range beyond mowing. If it is about renovation, transportation or what ever the task is – John Deere provides the right equipment.

WORK AND TRANSPORT

Not one day where you don't have to move material around. Our Gator™ line is offering various solutions.



PROGATOR™

Room for more: With its massive 907 kg cargo capacity and low centre of gravity, the PROGATOR can take it – literally.



GATOR™ TE

When quiet operation and zero emissions are the order of the day, the Gator™ TE really delivers. Thanks to an impressive combination of driving and utility features, you can go electric without compromising on power or functionality.

RENOVATION



AERATORS

If self propelled or tractor mounted – for aeration we offer the right size Aercore™.

MAINTENANCE



RAKES

Whenever a surface need a smooth finish, the 1200A field rake is the right choice.

COMPACT UTILITY TRACTORS



If you're looking for ultimate performance across every season, look no further than our compact utility tractors. With an optional temperature-controlled cab and AutoConnect™ Mowing Decks, these multipurpose machines never slow down.



1R, 2R & 3R SERIES

READY FOR ANYTHING

With their superb engineering, legendary build quality and innovative features, our compact utility models are the tool of choice for professionals who take pride in the work they do. Equipped with robust, high-capacity mowing decks, these models are ready to work.



VERSATILE

When they're not mowing, these compact workhorses can perform a wide range of other tasks professionally too.



Collector System (optional):

Connected to the tractor's hydraulics for easier emptying.

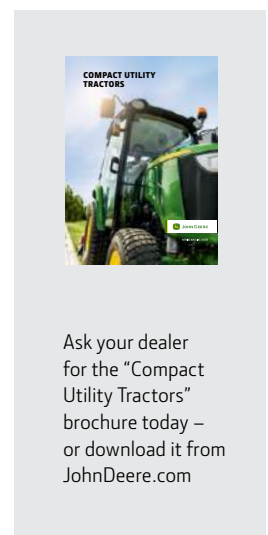


AUTOCONNECT™ MOWING DECKS

In no time at all, you can attach one of our AutoConnect™ Decks to the 1R, 2R and 3R Series without leaving your seat. Simply drive over the deck ramps, listen for two clicks as the deck attaches and you're done. Yes, it's that easy – and quick.



Cab (optional): Protect yourself from the elements with a cab that offers A/C and heating systems as options – or order our premium ComfortGard™ cab (3R models only) for unrivalled all-round visibility.



Ask your dealer for the "Compact Utility Tractors" brochure today – or download it from JohnDeere.com

SPECIFICATIONS

	Z740R	Z950R
ZERO TURN MOWERS		
ENGINE		
Type	Petrol	Petrol
Rated Engine, kW (hp) (Diesel: gross SAE J1995; Gas: net kW at rated kW)	16.2 (21.7) at 3,100 rpm	19 (25.5) at 3,250 rpm
Displacement, cm ³ (cu in)	726 (44.2)	852 (52)
Cylinders	V-Twin – overhead valve	Two
Injection	–	–
Cooling	Air	Air
Air Cleaner	Pre cleaner, replaceble	Pre cleaner, replaceble
Fuel Tank Capacity, ltr (gal)	30.2 (8)	43.5 (11.5)
VEHICLE		
Traction Drive	Hydrostatic	Hydrostatic
Speed and Direction Control	Twin premium levers	Twin premium levers
Travel Speed Forward, km/h (mph)	0 – 13.7 (0 – 8.6)	0 – 19.3 (0 – 12)
Travel Speed Reverse, km/h (mph)	0 – 6.3 (0 – 3.9)	0 – 7.2 (0 – 4.5)
Brake System	Integrated park brake; dynamic braking	Internal wet disc brakes; hand controlled park brake; dynamic braking
MOWER DECKS		
Available Widths / Type, cm (in)	122 (48) side discharge 137 (54) side discharge	137 (54) side discharge 152 (60) side discharge 152 (60) rear discharge
Deck construction	High-capacity (HC) PRO	Side Discharge: 7-Iron™ PRO (One-piece stamped steel with reinforcements); Rear discharge: fabricated
Deck thickness	3.8 mm (0.15 in / 9-gauge)	4.6 mm (0.179 in / 7-gauge)
PTO Engagement	V-belt	V-belt
Deck Drive	Foot lever	Hydraulic
Height-of-Cut Range / Increment, cm (in)	3.8 – 12.7 (1.5 – 5) / 0.6 (0.25)	2.54 – 14.0 (1 – 5.5) / 0.6 (0.25)
Number of Blades	3	3
Pre-Set Height of Cut	From operator platform – standard	From operator platform – standard
OPERATOR STATION		
Seat	High back with adjustable armrests, 61 cm (24 in) and ComfortGlide™ Suspension, mechanical; adjustable for weight	Deluxe Comfort Seat with suspension and armrest: ComfortGlide™ Suspension, mechanical; adjustable for weight
DIMENSIONS		
Overall Length, cm (in)	208 (82)	213 (84)
Overall Width (chute down), cm (in)	48 HC deck: 158 (62.3) 54 HC deck: 173 (68.2)	7-Iron™ Pro 54 deck: 175 (69) 7-Iron™ Pro 60 deck: 188 (74) Fastback™ 60 deck: 163 (64.2)
Height, cm (in) – ROPS up	182 (71.1)	185 (73)
Weight (with Fluids), kg (lb)	48 HC deck: 486 (1,070) 54 HD deck standard tires: 508 (1,117) 54 HD deck Tweel: 517 (1,137)	7-Iron™ Pro 60 deck: 586 (1,292)
Drive (Rear) Tyres	24 × 9.5-12 (48-in decks) 24 × 12-12 (54-in decks)	24 × 12-12
Drive (Rear) Tyres – Optional Michelin Tweel X Turf Airless Radial	24 × 12N12 (54-in decks)	24 × 12N12
Caster (Front) Wheel Size	13 × 6.5-6 flat free design	13 × 6.5-6 flat-free-design

Z994R

Z997R

	Diesel	Diesel with Diesel Partical Filter (DPF)
	18.4 (24.7) at 3,200 rpm	27.5 (37.4) at 2,800 rpm
	1,267 (77.3)	1,642 (100.2)
	Three	Three
	Indirect	Direct
	Liquid	Liquid
	Dry-type, replaceable	Dry-type, replaceable
	43.5 (11.5)	45.5 (12)
	Hydrostatic	Hydrostatic
	Twin premium levers	Twin premium levers
	0 – 17 (0 – 10.5)	0 – 18.5 (0 – 11.5)
	0 – 7.2 (0 – 4.5)	0 – 8.1 (0 – 5)
	Internal wet disc brakes; hand controled park brake; dynamic braking	Internal wet disc brakes; hand controled park brake; dynamic braking
	137 (54) side discharge 152 (60) side discharge 152 (60) rear discharge	152 (60) side discharge 152 (60) rear discharge 183 (72) side discharge 183 (72) rear discharge
	Side Discharge: 7-Iron™ PRO (One-piece stamped steel with reinforcements); Rear discharge: fabricated	Side Discharge: 7-Iron™ PRO (One-piece stamped steel with reinforcements); Rear discharge: fabricated
	4.6 mm (0.179 in / 7-gauge)	4.6 mm (0.179 in / 7-gauge)
	V-belt	Shaft
	Foot lever	Hydraulic
	2.54 – 14.0 (1 – 5.5) / 0.6 (0.25)	2.54 – 14.0 (1 – 5.5) / 0.6 (0.25)
	3	3
	From operator platform – standard	From operator platform – standard
	Deluxe Comfort Seat with suspension and armrest: ComfortGlide™ Suspension, mechanical; adjustable for weight	Deluxe Comfort Seat with suspension and armrest: ComfortGlide™ Suspension, mechanical; adjustable for weight
	226 (89)	244 (96)
	7-Iron™ Pro 54 deck: 175 (69) 7-Iron™ Pro 60 deck: 188 (74) Fastback™ 60 deck: 163 (64.2)	7-Iron™ Pro 60 deck: 188 (74) 7-Iron™ Pro 72 deck: 218.4 (86) Fastback™ 60 deck: 163 (64.2) Fastback™ 72 deck: 195 (76.8)
	198 (78)	216 (85)
	7-Iron™ Pro 54 deck: 764 (1,684)	7-Iron™ Pro 60 deck 805 (1,774) Fastback™ 60 deck: 829 (1,827) 7-Iron™-Pro 72 deck: 835 (1,841)
	24 × 12-12	26 × 12-12
	24 × 12N12	26 × 12N12
	13 × 6.5-6 flat-free design	15 × 6-6 flat-free design

SPECIFICATIONS

	1550	1570	1575
TERRAIN CUT FRONT ROTARY MOWERS			
ENGINE			
Type	Diesel	Diesel with Diesel Partical Filter (DPF)	Diesel with Diesel Partical Filter (DPF)
Rated Engine kW (hp), gross SAE J1995	18.4 (24.7) at 3,000 rpm	27.5 (37.4) at 2,800 rpm	27.5 (37.4) at 2,800 rpm
Displacement, cm ³ (cu in)	1,260 (77)	1,642 (100.2)	1,642 (100.2)
Cylinder	Three	Three	Three
Injection	Indirect	Direct	Direct
Fuel Tank Capacity, ltr (gal)	60.6 (16)	60.6 (16)	60.6 (16)
VEHICLE			
Transmission	Hydrostatic	Hydrostatic	Hydrostatic
Traction Drive	Single Speed 4WD	Single Speed 4WD	Single Speed 4WD
Differential Lock	Standard	Standard	Standard
Speed and direction control	Two pedal	Two pedal	Two pedal
Vehicle Speed Forward, km/h (mph)	0 – 19.3 (0 – 12)	0 – 19.3 (0 – 12)	0 – 19.3 (0 – 12)
Vehicle Speed Reverse, km/h (mph)	0 – 8 (0 – 5)	0 – 8 (0 – 5)	0 – 8 (0 – 5)
Brake System	Internal wet disc brakes; hand controlled park brake; steering brake; dynamic braking	Internal wet disc brakes; hand controlled park brake; steering brake; dynamic braking	Internal wet disc brakes; hand controlled park brake; steering brake; dynamic braking
Turning brakes	Standard	Standard	Standard
Implement drive	Front shaft	Front shaft	Front shaft
MOWER DECKS			
See separate Deck information			
OPERATOR STATION			
Seat	Comfort suspension – air ride optional	Comfort suspension – air ride optional	Comfort air ride
Power Steering	Standard	Standard	Standard
Comfort	Tilt steering wheel	Tilt steering wheel	Tilt steering wheel
Comfort Cab	No	No	Yes
COLLECTOR (optional)			
GLC1500 Collector	No	600 ltr capacity	No
DIMENSION			
Height with ROPS up, cm (in)	212 (83.5)	212 (83.5)	N/A as cab standard
Height with cab, cm (in)	N/A	N/A	213 (83.7)
Overall length without mower deck, cm (in)	222 (87.3)	222 (87.3)	222 (87.3)
Overall width without mower deck, cm (in)	131 (51.7)	131 (51.7)	131 (51.7)
Ground clearance, cm (in)	17 (6.5)	17 (6.5)	17 (6.5)
Weight (without mower deck and fuel), kg (lb)	832 (1,835)	889 (1,960)	1,105.5 (2,435)
Front Tyres	23 × 10.5-12	23 × 10.5-12	23 × 10.5-12
Rear Tyres	18 × 8.5-10	18 × 8.5-10	18 × 8.5-10

	60 SIDE DISCHARGE	72 SIDE DISCHARGE	62 REAR DISCHARGE	72 REAR DISCHARGE	60 SIDE DISCHARGE FOR USE WITH GLC1500 COLLECTOR	72 SIDE DISCHARGE FOR USE WITH GLC1500 COLLECTOR
MOWER DECKS						
FITS	1550, 1570, 1575, 1580, 1585	1550, 1570, 1575, 1580, 1585	1550, 1570, 1575, 1580, 1585	1550, 1570, 1575, 1580, 1585	1570, 1580, 1585W	1570, 1580, 1585
Cutting Width, cm (in)	153 (60)	183 (72)	158 (62)	183 (72)	153 (60)	183 (72)
Cutting Height, cm (in)	2.54 – 15.24 (1 – 6)	2.54 – 15.24 (1 – 6)	2.54 – 15.24 (1 – 6)	2.54 – 15.24 (1 – 6)	2.54 – 15.24 (1 – 6)	2.54 – 15.24 (1 – 6)
Deck Drive / Gearbox Type	Shaft / L-Type	Shaft / L-Type	Shaft / L-Type	Shaft / L-Type	Shaft / T-Type	Shaft / T-Type
Deck construction	7-Iron™ stamped steel, 4.6 mm (0.179 in / 7-gauge)	7-Iron™ stamped steel, 4.6 mm (0.179 in / 7-gauge)	Fabricated steel	Fabricated steel	7-Iron™ stamped steel, 4.6 mm (0.179 in / 7-gauge)	7-Iron™ stamped steel, 4.6 mm (0.179 in / 7-gauge)
Mulch Kit Available	Yes	Yes	Yes	Yes	Yes	Yes

1580

1585

	Diesel with Diesel Particle Filter (DPF)	Diesel with Diesel Particle Filter (DPF)
	27.5 (37.4) at 2,800 rpm	27.5 (37.4) at 2,800 rpm
	1,642 (100.2)	1,642 (100.2)
	Three	Three
	Direct	Direct
	60.6 (16)	60.6 (16)
	Hydrostatic	Hydrostatic
	Two speed 4WD	Two speed 4WD
	Standard	Standard
	Two pedal	Two pedal
	Low = 0 – 13.7 (0 – 8.5) High = 0 – 24.1 (0 – 15)	Low = 0 – 13.7 (0 – 8.5) High = 0 – 24.1 (0 – 15)
	0 – 8 (0 – 5)	0 – 8 (0 – 5)
	Internal wet disc brakes; hand controlled park brake; steering brake; dynamic braking	Internal wet disc brakes; hand controlled park brake; steering brake; dynamic braking
	Standard	Standard
	Front shaft	Front shaft
	Comfort suspension – air ride optional	Comfort air ride
	Standard	Standard
	Tilt steering wheel	Tilt steering wheel
	No	Yes
	Optional 600 or 900 ltr capacity	Optional 600 or 900 ltr capacity
	216 (84.8)	N/A as cab standard
	N/A	216 (85.2)
	222 (87.3)	222 (87.3)
	141 (55.5)	148 (58)
	20 (7.8)	20 (7.8)
	962 (2,120)	1,177 (2,595)
	26 × 12.0-12	26 × 12.0-12
	20 × 10.0-10	20 × 10.0-10

1600T SERIES III

WIDE-AREA ROTARY MOWER

ENGINE	
Type	Diesel with Diesel Partical Filter (DPF)
Rated Engine kW (hp), gross SAE J1995	44 (60) at 3,000 rpm
Displacement, cm ³ (cu in)	2,091 (127.6)
Cylinder	Four, turbocharged
Injection type	Direct injection diesel
Fuel Tank Capacity, ltr (gal)	83.3 (22)
VEHICLE	
Transmission	Hydrostatic
Traction drive	4-wheel-drive; On demand and full time – forward only
Differential lock	Standard
Speed and Direction Control	Two pedal
Vehicle Speed Forward, km/h (mph)	Low = 0 – 14.5 (0 – 9) High = 0 – 24 (0 – 15)
Vehicle Speed Reverse, km/h (mph)	Low: 0 – 7.2 (0 – 4.5) High: 0 – 12 (0 – 7.5)
Brake System	Internal hydraulic wet disc brakes; hand controled park brake; steering brake; dynamic braking
Turning brakes	Standard
MOWER DECKS	
Discharge	Rear
Design	Two wing decks, one center deck – hydraulic deck drive
OPERATOR STATION	
Seat	Comfort air ride
Steering	Power steering
Comfort	Tilt steering wheel
DIMENSIONS	
Vehicle Height with ROPS up, cm (in)	249 (98)
Height with ROPS folded, cm (in)	188 (74)
Overall Length with mowing decks, cm (in)	335 (132)
Ground Clearance, cm (in)	16.5 (6.5)
Wheelbase, cm (in)	152 (60)
Mowing Width, cm (in)	158 (62) / 239 (94) / 325 (128)
Weight including deck(s) with ROPS, kg (lb)	2,109 (4,650)
Front	26 × 12-12
Rear	18 × 9.5-8

SPECIFICATIONS

	X940	X948	X949
X900 SERIES			
ENGINE			
Type	Diesel	Diesel	Diesel
Rated Engine kW (hp), gross SAE J1995	18 (24.5) at 3,400 rpm	18 (24.5) at 3,400 rpm	18 (24.5) at 3,400 rpm
Displacement, cm ³ (cu in)	903 (55.1)	903 (55.1)	903 (55.1)
Cylinders	Three, cast-iron liners	Three, cast-iron liners	Three, cast-iron liners
Injection	Indirect	Indirect	Indirect
Fuel Tank Capacity, ltr (gal)	19.7 (5.2)	19.7 (5.2)	19.7 (5.2)
VEHICLE			
Traction Drive	Hydrostatic	Hydrostatic	Hydrostatic
Drive System	Twin Touch™ Foot Pedals, 2-Wheel Drive, 2-Wheel-Steer	Twin Touch™ Foot Pedals, 4-Wheel Drive, 2-Wheel-Steer	Twin Touch™ Foot Pedals, 4-Wheel Drive, 4-Wheel-Steere
Max. Speed km/h (mph) Forward	13.7 (8.5)	13.7 (8.5)	13.7 (8.5)
Max. Speed km/h (mph) Reverse	9.7 (6)	9.7 (6)	9.7 (6)
Cruise Control	Standard	Standard	Standard
Differential Lock	Standard	Standard	Standard
Brake System	Internal wet disc brakes; hand controled park brake; dynamic braking	Internal wet disc brakes; hand controled park brake; dynamic braking	Internal wet disc brakes; hand controled park brake; dynamic braking
HYDRAULICS			
Selective Control Valves (SCVs)	2 Dual	2 Dual	2 Dual
Hydraulic Flow, l/min	21.6	21.6	21.6
MOWER DECKS			
Available Widths / Type, cm (in)	122 (48) / 137 (54) / 152 (60)	122 (48) / 137 (54) / 152 (60)	122 (48) / 137 (54) / 152 (60)
Deck construction	Stamped Steel – 137/152 drive over construction	Stamped Steel – 137/152 drive over construction	Stamped Steel – 137/152 drive over construction
PTO Engagement	Electro-Hydraulic	Electro-Hydraulic	Electro-Hydraulic
Deck Drive	Shaft – 137/152 optional AutoConnect™	Shaft – 137/152 optional AutoConnect™	Shaft – 137/152 optional AutoConnect™
Deck Lift / Lower	Hydraulic	Hydraulic	Hydraulic
Height-of-Cut Range / Increment, cm (in)	2.5 – 13.3 (1 – 5.25) / 0.6 (0.25)	2.5 – 13.3 (1 – 5.25) / 0.6 (0.25)	2.5 – 13.3 (1 – 5.25) / 0.6 (0.25)
Number of Blades	3	3	3
Pre-Set Height of Cut	From operator platform – standard	From operator platform – standard	From operator platform – standard
COLLECTOR (optional)			
Type	3-bag-bagger	3-bag-bagger	3-bag-bagger
Capacity, ltr	500	500	500
Maximum Lift Height, cm (in)	–	–	–
Fill Indicator	–	–	–
OPERATOR STATION			
Standard	2 piece professional comfort seat (seat back height 53.3 cm / 21 in), suspension, optional armrest, slide rail with 14 positions (14.8 cm / 7 in)	2 piece professional comfort seat (seat back height 53.3 cm / 21 in), suspension, optional armrest, slide rail with 14 positions (14.8 cm / 7 in)	2 piece professional comfort seat (seat back height 53.3 cm / 21 in), suspension, optional armrest, slide rail with 14 positions (14.8 cm / 7 in)
Optional	Air suspension seat	Air suspension seat	Air suspension seat
DIMENSIONS			
Length, cm (in)	191 (75)	191 (75)	191 (75)
Height without cab, ROPS up, cm (in)	198 (78)	198 (78)	198 (78)
Height with cab, cm (in)	189 (74.3)	189 (74.3)	189 (74.3)
Weight, kg (lb) no fuel or Mower Deck	472 (1,042)	513 (1,132)	550 (1,213)
Width without Deck, cm (in)	119 (47)	119 (47)	122 (48)
Ground Clearance, cm (in)	18 (7.1)	18 (7.1)	18 (7.1)
Tyres Front	18 × 8.50-8	18 × 8.50-10	18 × 8.50-10
Tyres Rear	26 × 12.00-12	26 × 12.00-12	26 × 12.00-12
SAFETY	Reverse Implement Option (RIO)	Reverse Implement Option (RIO)	Reverse Implement Option (RIO)

* Front weights required for high dump.

X950R

	Diesel
	18.5 (25.2) at 3,200 rpm
	1,116 (68.1)
	Three, cast-iron liners
	Indirect
	20.4 (5.4)
	Hydrostatic
	Twin Touch™ Foot Pedals, 2-Wheel Drive, 2-Wheel-Steer
	14.5 (9)
	9.7 (6)
	Standard
	Standard, Hydraulic Traction Assist
	Internal wet disc brakes; hand controlled park brake; dynamic braking
	Multifunctional Joystick
	20.9
	122 (48) / 137 (54)
	Stamped Steel
	Electric Drive Clutch
	Shaft
	Hydraulic
	2.5 – 11.2 (1 – 4.5) / 0.6 (0.25)
	2
	From operator platform – standard
	Optional Low or High Dump
	Low Dump: 570; High Dump: 650*
	High Dump: 203.7 (80.2)
	Real-time Ultrasonic Fill Detection
	2 piece professional comfort seat (seat back height 53.3 cm / 21 in), suspension, optional armrest
	Air suspension seat
	Low Dump: 338 (133) High Dump: 345 (135.8)
	208 (82)
	194 (76)
	Low Dump: 822 (1,812) High Dump: 1,014 (2,235) – incl. Hopper
	118 (46)
	14.5 (5.7)
	18 × 8.5-8
	26 × 12-12
	Reverse Implement Option (RIO)

180E, 220E, 180SL, 220SL, 260SL**WALK-BEHIND REEL MOWERS**

ENGINE	
Type	Air-cooled, 4-cycle
Maximum rated power per SAE J1349, kW (hp)*	2.6 (3.5) at 3,600 rpm
Fuel tank capacity, pt (l)	4.5 (2.5)
VEHICLE	
Transport Clutch	Belt tension
Traction drum	Dual, aluminium
Forward speed, km/h (mph)	7.2 (4.5) with transport wheels at 3,000 engine rpm
Roller (rear), mm (in)	Aluminium, 190 (7.5) diameter
CUTTING UNIT	
Cutting width, cm (in)	180SL, 180E: 45.7 (18) 220SL, 220E: 55.9 (22) 260SL: 66 (26)
Cutting height mm (in)	2 – 22 (5/64 – 7/8) (depending on bedknife)
Diameter, mm (in)	127 (5)
Number of blades	180SL, 180E, 220SL, 220E: 11 or 14 blades 260SL: 7 or 11 blades
Reel drive	180E, 220E: electric reel motor 180SL, 220SL, 260SL: direct chain drive
Roller (front) (grooved or smooth), mm (in)	Machined steel, 50 (2) diameter (for cutting height adjustment)
Grass Catcher Size, kg (lb)	180E, 220E: 3.2 (7) 180SL, 220SL: 2.7 (6) 260SL: 3.7 (8.2)
OPERATOR	
Handle bar	Loop style, height adjustable
Levers	Park brake, clutch, throttle, On/off switch
DIMENSIONS	
Length (tyres installed), cm (in)	180E, 220E: 99 (39) 180SL, 220SL, 260SL: 94 (37)
Width (tyres installed), cm (in)	180E, 220E: 94.6 (37.25) 180SL, 220SL: 84.5 (33.3) 260SL: 105 (41.3)
Height (optional tyres installed), cm (in)	119 (47)
Weight (less GTCs, gear drive and transport wheel, with catcher), kg (lb)	180E: 113 (249) 220E: 119 (262) 180SL: 92.7 (204) 220SL: 99.5 (219) 160SL: 107.7 (237)

SPECIFICATIONS

	2653B	7200A
TRIPLE REEL MOWERS		
ENGINE		
Type	Diesel	Diesel
Rated Engine kW (hp), gross SAE J1995	14.6 (19.6) at 3,000 rpm	18.4 (24.7) at 3,000 rpm
Displacement, cm ³ (cu in)	854 (52.1)	1,267 (77.3)
Cylinders	Three	Three
Injection	Indirect	Indirect
Fuel Tank Capacity, ltr (gal)	30 (8)	45.4 (12)
VEHICLE		
Traction drive	Hydrostatic	eHydro™ electronic-controlled hydrostatic pump to wheel motors
Drive System	3 wheel drive, equal traction to all wheels	GRIP All Wheel Drive Traction System; when installed, AWD in mow and transport
Speed and Direction Control	Two pedals	two pedals
Mowing speed, km/h (mph)	0 – 8 (0 – 5)	0 – 10 (0 – 6)
Transport speed, km/h (mph)	0 – 12.8 (0 – 8)	0 – 14 (0 – 9)
Reverse speed, km/h (mph)	0 – 8.1 (0 – 5)	0 – 10 (0 – 6)
Braking system	2-wheel disc; hand controlled park brake; dynamic braking	Internal hydraulic wet disc brakes; hand controlled park brake; dynamic braking
CUTTING UNITS		
Number	3 reel cutting units	3 reel cutting units
Size, cm (in)	Quick Adjust QA7 66 (26) or QA7 76 (30)	Quick Adjust QA7 66 (26) or QA7 76 (30)
Reel diameter (std. cutting unit), cm (in)	17.8 (7)	17.8 (7)
Number of blades	5 or 8	5 or 8
Cutting width, cm (in)	183 (72) with 26 in QA7 cutting unit; 213 (84) with 30 in QA7 cutting unit	173 (68) – 183 (72) with 26 in QA7 cutting unit; 203 (80) – 213 (84) with 30 in QA7 cutting unit – width on demand system
Cutting height, mm (in)	9 – 63 (0.35 – 2.48)	9 – 63 (0.35 – 2.48)
Reel drive	Gear pump – single	Gear pump – single
Front rollers, cm (in)	7.5 (3) grooved, solid or spiral (optional)	7.5 (3) grooved, solid or spiral (optional)
Backlapping	Standard	Standard
OPERATOR STATION		
Steering	Hydraulic power steering	Hydraulic power with double acting steering cylinder
DIMENSIONS		
Height with ROPS, cm (in)	208 (82)	213 (84)
Length, cm (in)	236 (93)	338 (133)
Width, cm (in)	Width in mowing position 183 (72) or 213 (84)	Transport width 173 (68); 183 (72)
Weight, kg (lb)	Full fluids, no operator, no fuel, 26 in units raised: 863.1 (1,903)	No operator: 1,039 (2,290) – cutting units lowered
Wheels and Tyres	20 × 10-10 turf Drive Tyres and 20 × 10-8 turf Steering Tyre	24 × 12-12 turf trac Drive Tyres and 24 × 12-12 multi trac Steering Tyre

ENGINE		
Type	Diesel	
Rated Engine kW (hp), gross SAE J1995	18.4 (24.7) at 3,000 rpm	
Displacement, cm ³ (cu in)	1,267 (77.3)	
Cylinders	Three	
Injection	Indirect	
Fuel Tank Capacity, ltr (gal)	45.4 (12)	
VEHICLE		
Traction drive	eHydro™ electronic-controlled hydrostatic pump to wheel motors	
Drive System	GRIP All Wheel Drive Traction System; when installed, AWD in mow and transport	
Mowing, km/h (mph)	0 – 10 (0 – 6)	
Transport, km/h (mph)	0 – 14 (0 – 9)	
Reverse, km/h (mph)	0 – 10 (0 – 6)	
Braking system	Internal hydraulic wet disc brakes; hand controlled park brake; dynamic braking	
CUTTING UNITS		
Number of units	3 reel cutting units	
Size, cm (in)	Quick Adjust QA7 66 (26) or QA7 76 (30)	
Reel diameter (std. cutting unit), cm (in)	17.8 (7)	
Total cutting width, cm (in)	173 (68) – 183 (72) with 26 in QA7 cutting unit; 203 (80) – 213 (84) with 30 in QA7 cutting unit – width on demand system	
Cutting height, mm (in)	9 – 63 (0.35 – 2.48)	
Reel drive	Gear pump – single	
Rollers, cm (in)	7.5 (3) grooved, solid or spiral (optional)	
Backlapping	Standard	
OPERATOR STATION		
Steering	Hydraulic power with double acting steering cylinder	
Forward/reverse	Standard	
Seat	Standard	
Tilt steering	Standard	
TechControl Display	Standard	
DIMENSIONS		
Height with ROPS, cm (in)	213 (84)	
Length with catchers, cm (in)	338 (133)	
Transport width, cm (in)	173 (68); 183 (72)	
Mowing position width, cm (in)	183 (72) or 213 (84)	
Wheels and Tyres	24 × 12-12 multi trac Steering Tyre	

6080A, 6500A, 6700A, 6080A E-CUT™, 6500A E-CUT™**PRECISIONCUT™ & E-CUT™ HYBRID FAIRWAY MOWERS**

Diesel
18.6 (24.7) at 3,000 rpm
1,267 (77.3)
Three
Indirect
45.4 (12)
eHydro™ electronic-controlled hydrostatic pump to wheel motors
GRIP All Wheel Drive Traction System; when installed, AWD in mow and transport
0 – 12.9 (0 – 8)
0 – 16.1 (0 – 10)
0 – 10 (0 – 6)
Internal hydraulic wet disc brakes with dynamic braking through closed loop hydrostatic system
5
6080A + E-CUT™ : QA5 46 (18) 6500A + E-CUT™ : QA5 56 (22) 6700A : QA7 56 (22)
6080A + E-CUT™, 6500A + E-CUT™ : 12.7 (5) 6700A : 17.8 (7)
6080A + E-CUT™ : 203 (80) 6500A + E-CUT™, 6700A : 254 (100)
2.0 – 28.5 (0.078 – 1.125)
6080A, 6500A, 6700A : Gear pump – single 6080A E-CUT™, 6500A E-CUT™ : 48-V, 180-amp alternator belt-driven by the engine
6080A + E-CUT™, 6500A + E-CUT™ : 5.1 (2) front and rear; 7.6 (3) optional; 6.3 (2.5) front optional 6700A : 7.6 (3)
Standard
Hydraulic power with double acting steering cylinder
2-pedal
Suspension seat with seat belts and arm rest; fore/aft adjustment; weight and lumbar adjustment
Left Foot operated for easy adjustment
Yes
6080A + E-CUT™ : 216 (85) 6500A + E-CUT™, 6700A : 218 (86)
6080A + E-CUT™ : 305 (120) 6500A + E-CUT™, 6700A : 307 (121)
6080A + E-CUT™ : 232 (91) 6500A + E-CUT™ : 218 (85) 6700A : 219 (86)
6080A + E-CUT™ : 233 (92) 6500A + E-CUT™ : 285 (112) 6700A : 287 (113)
26.5 × 14 – 12 Smooth Drive Tyres and 24 × 13 – 12 Smooth Steering Tyre

9009A**TERRAINCUT™ ROUGH MOWER**

ENGINE	
Type	Diesel with Diesel Particle Filter (DPF)
Rated Engine kW (hp), gross SAE J1995	41.1 (55.9) at 2,800 rpm
Displacement, cm ³ (cu in)	2,091 (127.6)
Cylinder	Four, turbocharged
Air cleaner	2-stage dry element
Cooling system	Liquid centrifugal pump; forward machine location for optimum cooling
Fuel Tank Capacity, ltr (gal)	60.6 (16)
VEHICLE	
Traction drive	eHydro™ servo controlled hydraulic traction pump
Drive System	All-wheel-drive GRIP system; GRIP traction provides hydraulic flow between front and opposite rear wheel for increased traction to reduce high side tire slippage
Mowing, km/h (mph)	0 – 12.8 (0 – 8)
Transport, km/h (mph)	0 – 20.12 (0 – 12.5)
Reverse, km/h (mph)	0 – 6.4 (0 – 5)
Brake system	Internal hydraulic wet disc brakes with dynamic braking through closed loop hydrostatic system
MOWER DECKS	
Cutting width, cm (in)	274 (108)
Deck Construction	3.4 mm (0.13 in, 10-gauge) steel stamped deck with front skid plate 38 mm (1.5 in) tall and 12.7 mm (0.5 inch) thick steel stock welded to the decks edge
Deck drive	Tandem gear pump, Direct-coupled hydraulic gear motor
Mower lift	One-touch single handle
PTO	Electric Switch on CommandARM™ for quick and easy transition from mow to transport
Cutting deck width, cm (in)	68.58 (27)
Cutting height range, cm (in)	1.91 – 10.2 (0.75 – 4); no tool adjustment
Rear roller diameter, cm (in)	7.62 (3)
Front rollers, cm (in)	12.70 (5)
OPERATOR STATION	
Steering	Hydraulic power with dual rod, double acting steering cylinder
Throttle	No throttle lever; Automatic controls with AutoPedal™ foot controls; manual control through TechControl Display
TechControl Display	Yes
Seat	Air Ride Suspension seat with seat belts and arm rest; fore / aft adjustment; weight and lumbar adjustment
Tilt steering	Left Foot operated for easy adjustment
Forward / reverse	2-pedal
DIMENSIONS	
Height with ROPS, cm (in)	222 (87.4)
Length, cm (in)	339 (134)
Width, cm (in)	229 (90)
Mowing width, cm (in)	274 (108)
Operating weight wet (cutting units raised), kg (lb)	1,814 (4,000)
Front drive tyres	26.5 × 14-12 Ultra Trac
Steering tyres	20 × 12-10 turf

THE 3039R

ONE TRACTOR – ONE HUNDRED JOBS.
NO MATTER THE CHALLENGE YOU'RE FACING.



This literature has been compiled for worldwide circulation. While general information, pictures and descriptions are provided, some illustrations and text may include finance, credit, insurance, product options and accessories not available in all regions. Please contact your local dealer for details. John Deere reserves the right to change specification and design of products described in this literature without notice. The green and yellow colour scheme, the leaping deer logo and the JOHN DEERE word mark are trademarks of Deere & Company.